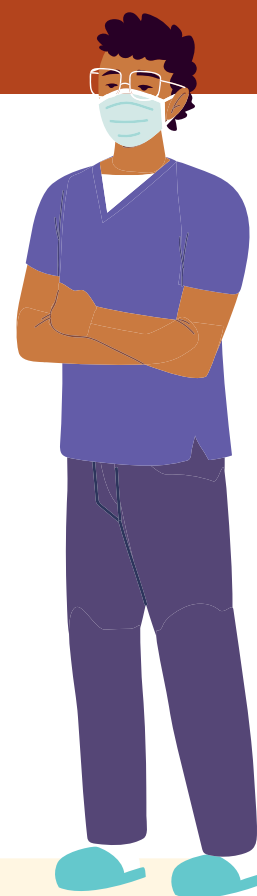


Compliance & Regulation Workgroup



- Create a regulatory & compliance requirement infographic to reduce the time nurses spend on documentation.
- Publish an infographic detailing state and national requirements for mandatory learning & training to streamline modules for hospitals & unburden health workers.

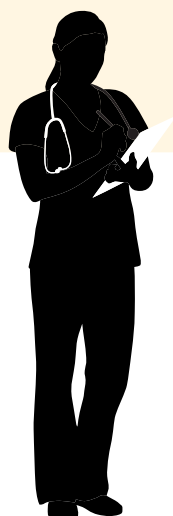
Nationally, **53%**

of RNs reported that reducing the documentation burden would be extremely effective for reducing stress. (AMN Healthcare, 2023)



Less than **4%** of WA nurses reported their facility had implemented strategies to reduce time spent on documentation. (WGN Burnout Report, 2024)

According to a study published in the [Journal of Patient Safety](#), hospitals that invested in comprehensive training saw annual savings of...



“Workload per nurse with increased documentation and responsibilities leaving little time for true patient care . . . This is all detrimental to patient care. Patients don’t understand and demand more and become angry. It’s a broken system just getting worse.” (WGN Burnout Report, 2024)

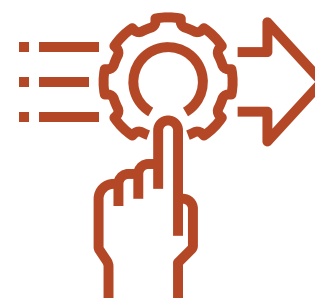
ACTION STEPS



Collect compliance requirements for draft infographics.



Develop a comprehensive dissemination plan.



Finalize, publish, & disseminate infographics.



Measuring & Assessment

- Have organizations track documentation time before and after implementing strategies to measure impact.
- Have organizations track costs related to mandatory trainings and cost savings when reducing requirements.

In 2025, WGN convened workgroups aligned with the [National Academy of Medicine’s National Plan for Health Workforce Well-being](#), a nationally recognized best-practice framework for strengthening the nursing workforce through well-being. The strategies highlighted in these infographics were developed by these workgroups. Not all identified strategies are represented here. To view the 2024 Prioritizing Nursing Well Being to Strengthen the Workforce Burnout Survey report, visit www.wcnursing.org/data-reports-publications/.